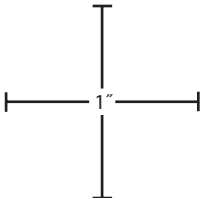
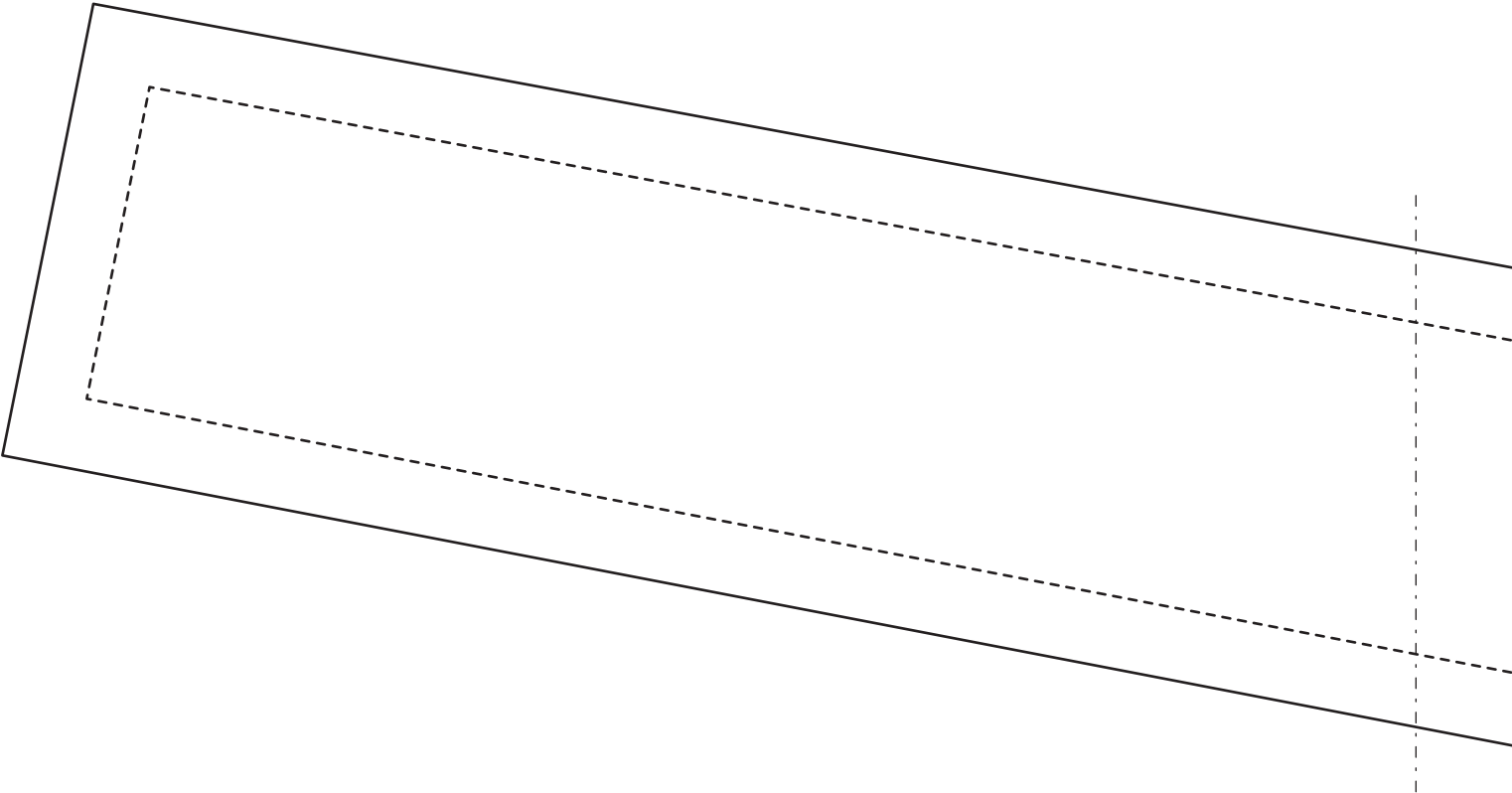
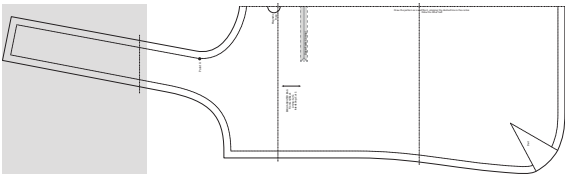


Emilia Quilted Bag Front and Back Pattern

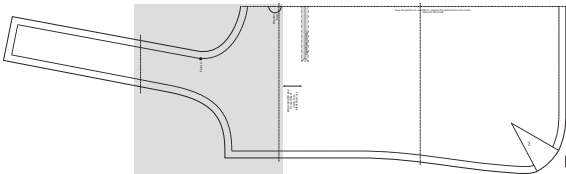
To make complete pattern, join the following pages, following the diagram for reference.



Use a ruler to measure these inch marks to verify that printout is correctly sized.

Emilia Quilted Bag Front and Back Pattern

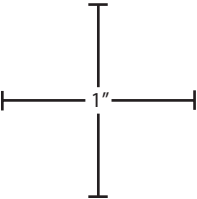
To make complete pattern, join the following pages, following the diagram for reference.



Magnetic
Snap

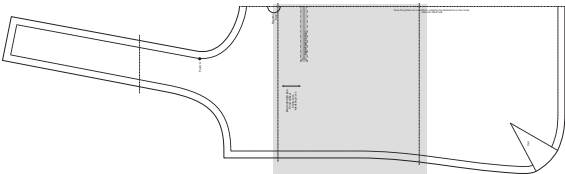
Point A

EMILIA QUILTED BAG



Emilia Quilted Bag Front and Back Pattern

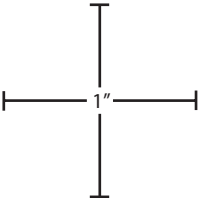
To make complete pattern, join the following pages, following the diagram for reference.



Draw the pattern as is and flip it
Draw

Magnetic
Snap

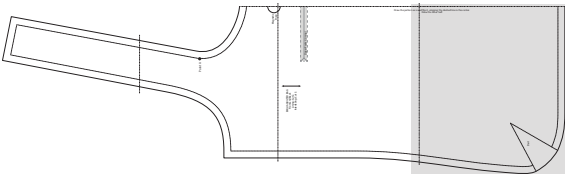
Zipper Pocket (Lining)



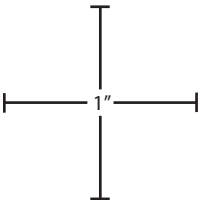
EMILIA QUILTED BAG
Front and Back
Lining: Cut 2.
Interfacing: Cut 2.

Emilia Quilted Bag Front and Back Pattern

To make complete pattern, join the following pages, following the diagram for reference.



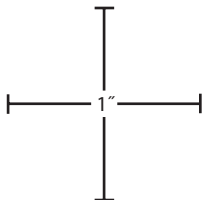
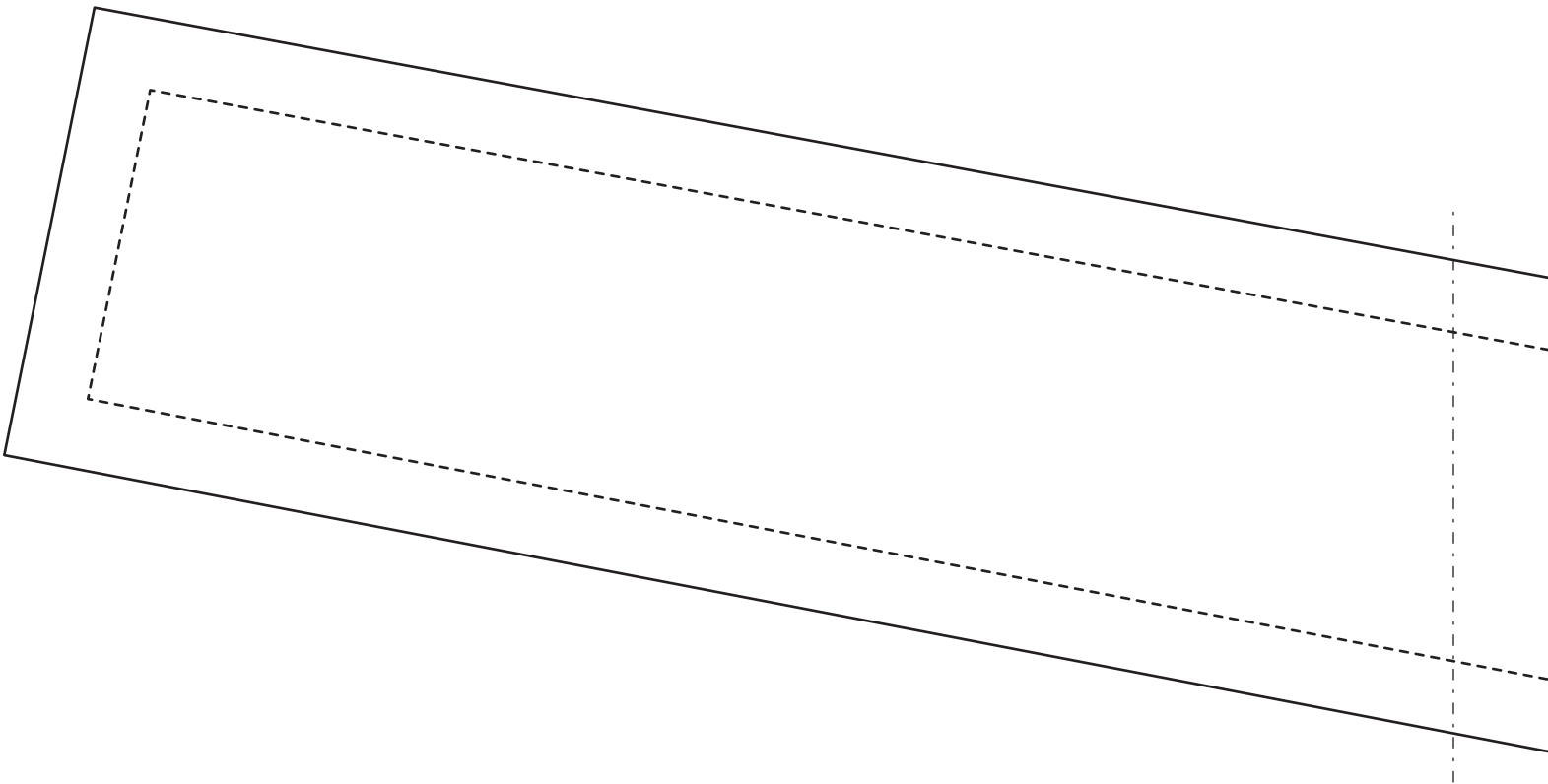
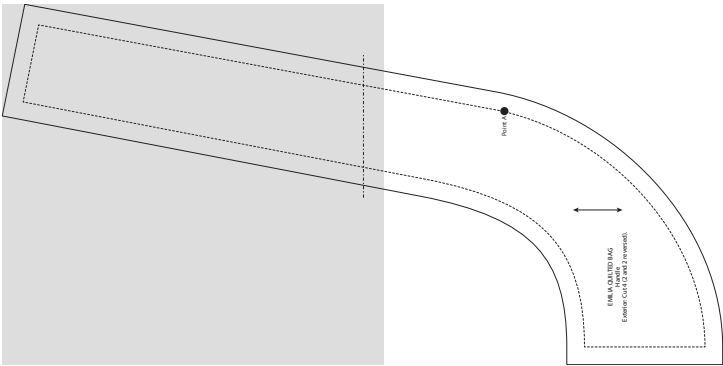
is is and flip it, aligning the dashed line in the center.
Draw the other half.



Dart

Emilia Quilted Bag Handle Pattern

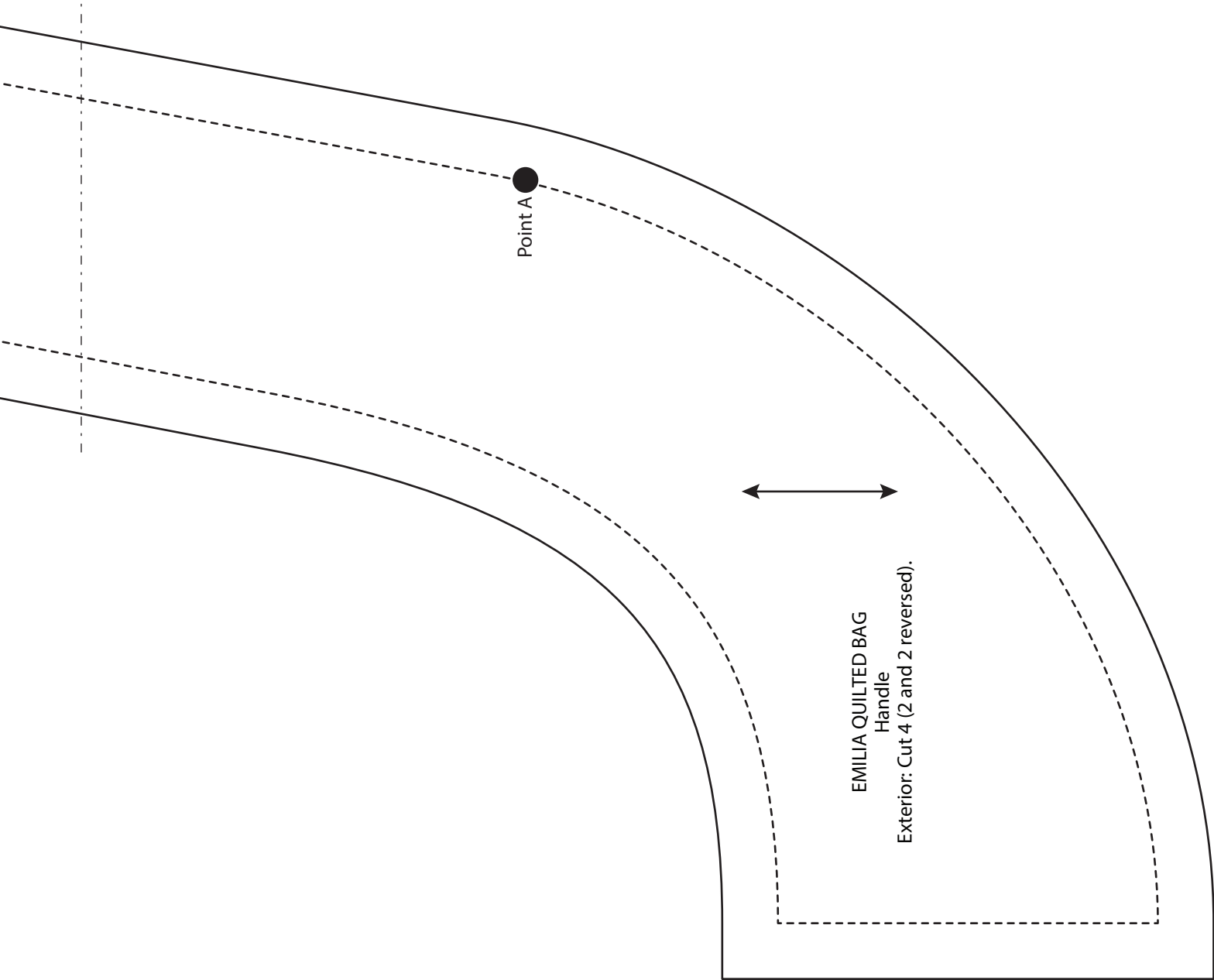
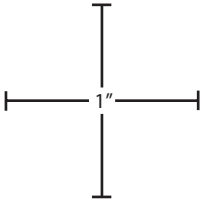
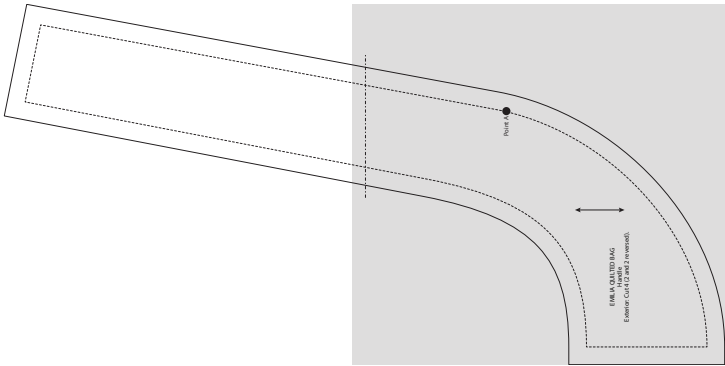
To make complete pattern, join the following pages, following the diagram for reference.



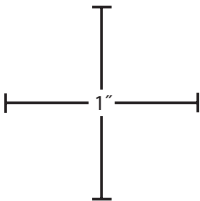
Use a ruler to measure these inch marks to verify that printout is correctly sized.

Emilia Quilted Bag Handle Pattern

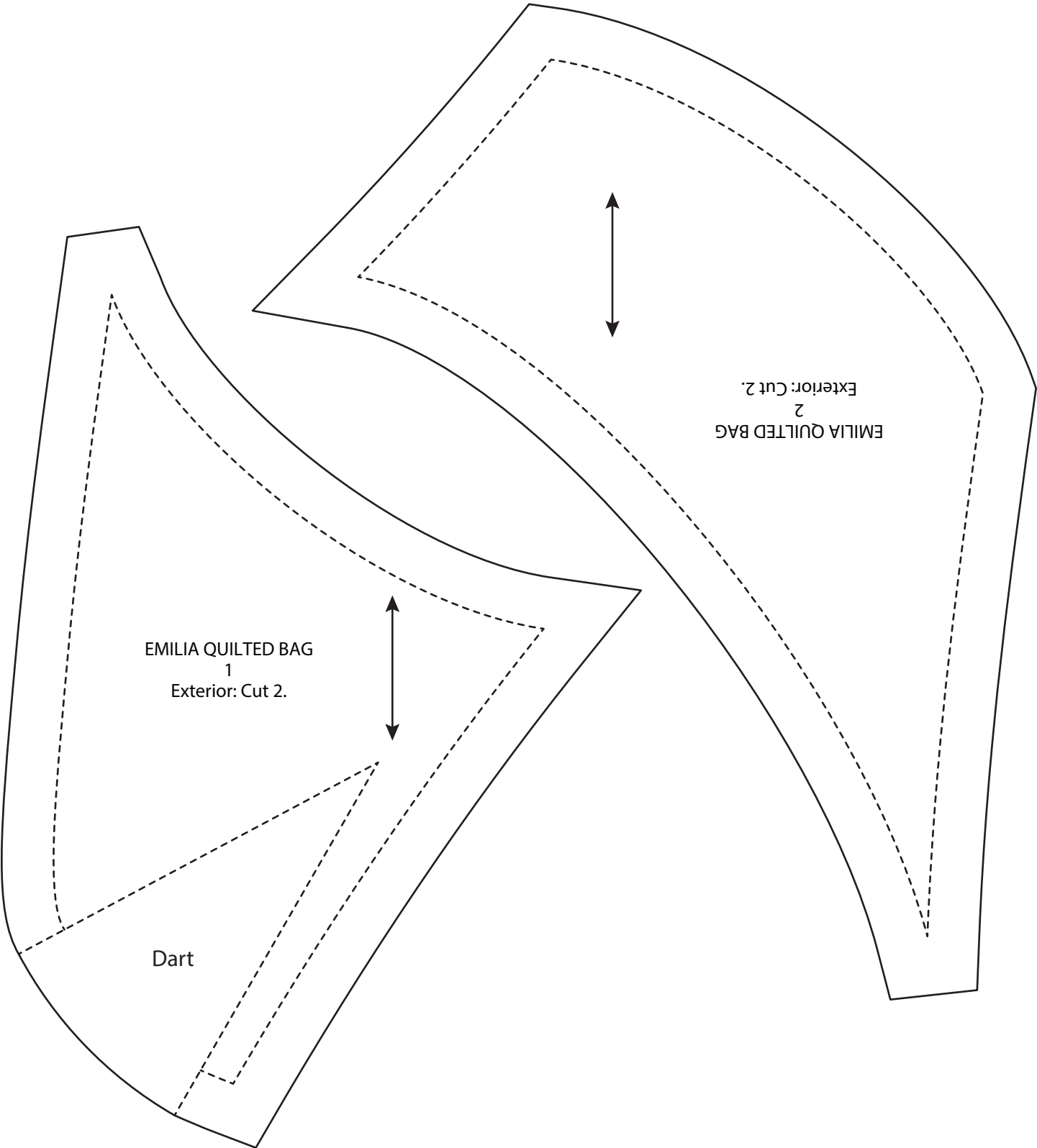
To make complete pattern, join the following pages, following the diagram for reference.



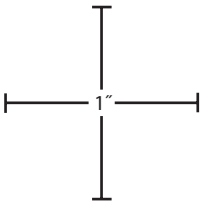
Emilia Quilted Bag 1 Pattern
Emilia Quilted Bag 2 Pattern



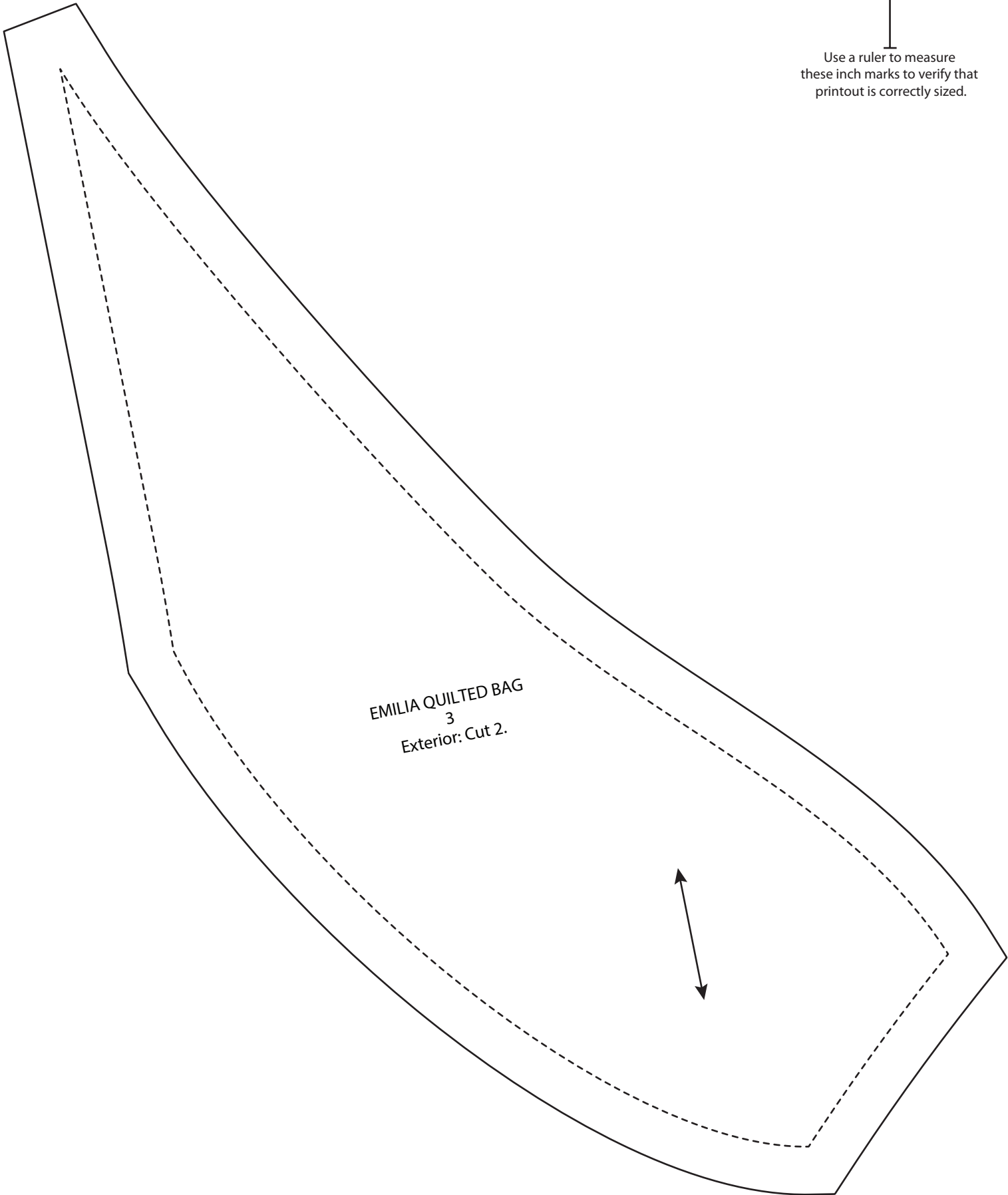
Use a ruler to measure these inch marks to verify that printout is correctly sized.



Emilia Quilted Bag 3 Pattern



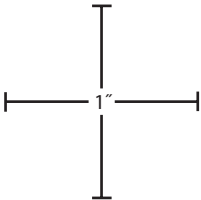
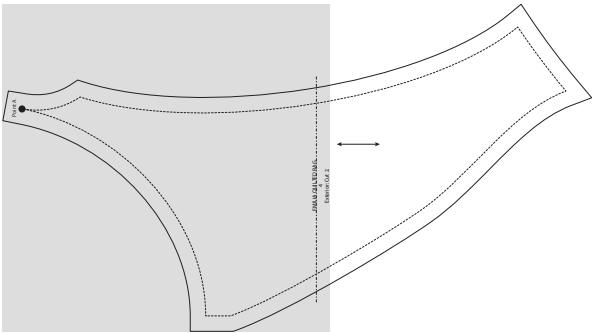
Use a ruler to measure these inch marks to verify that printout is correctly sized.



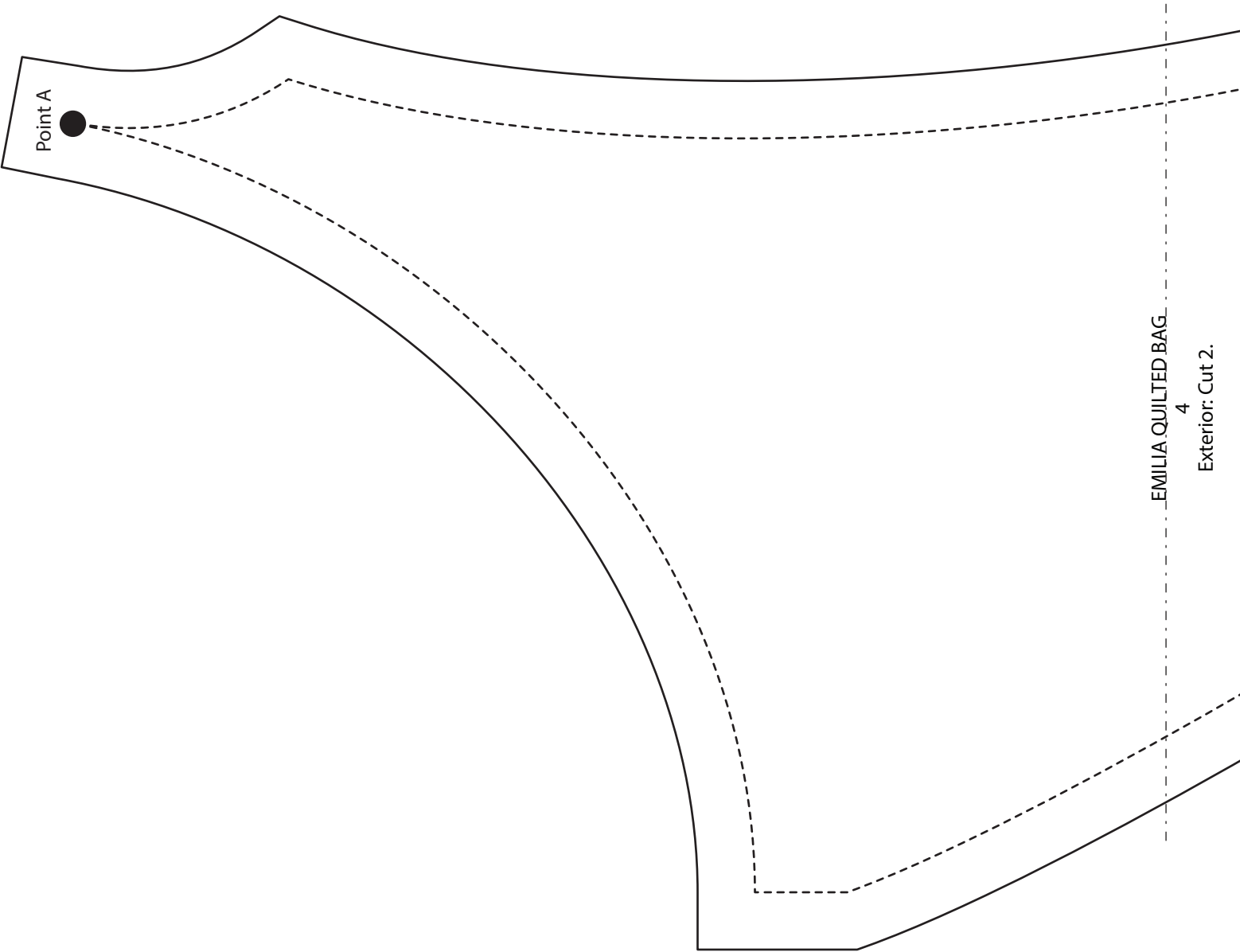
EMILIA QUILTED BAG
3
Exterior: Cut 2.

Emilia Quilted Bag 4 Pattern

To make complete pattern, join the following pages, following the diagram for reference.

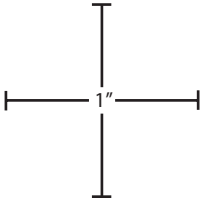
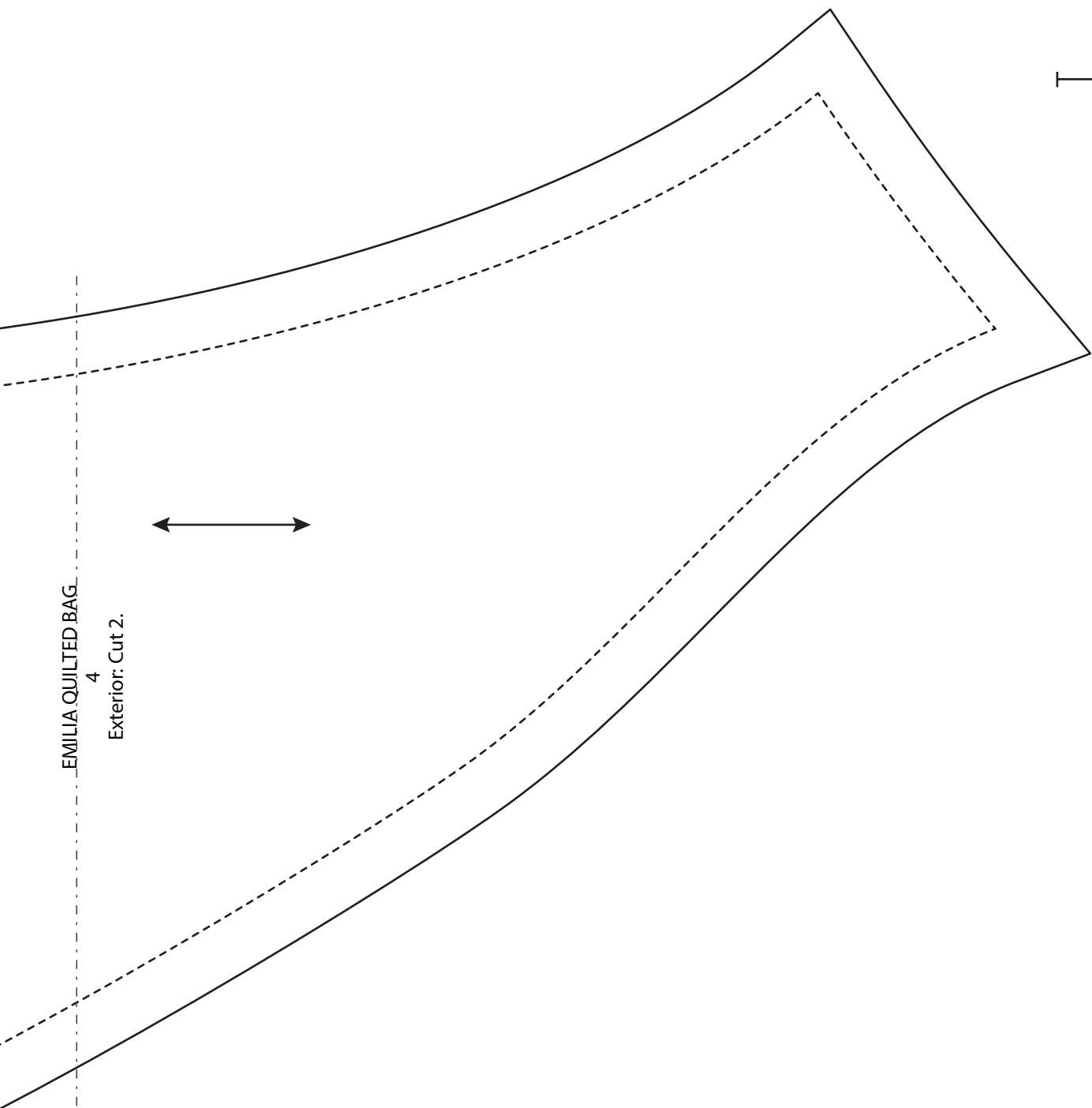
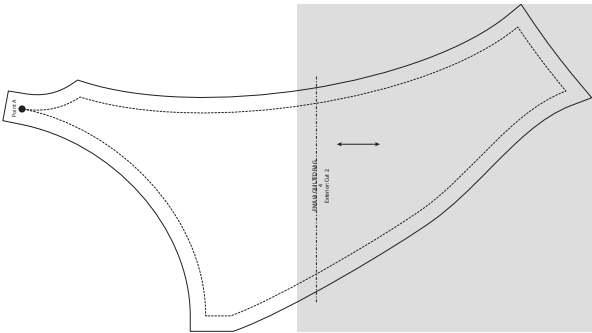


Use a ruler to measure these inch marks to verify that printout is correctly sized.



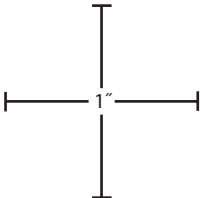
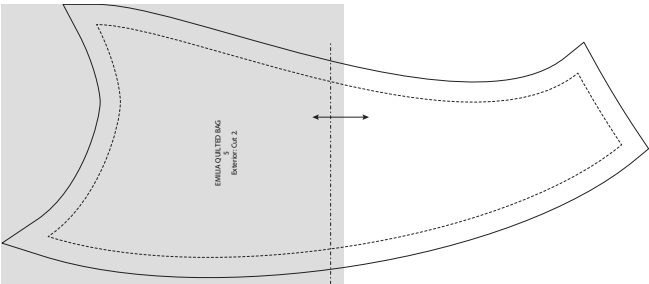
Emilia Quilted Bag 4 Pattern

To make complete pattern, join the following pages, following the diagram for reference.

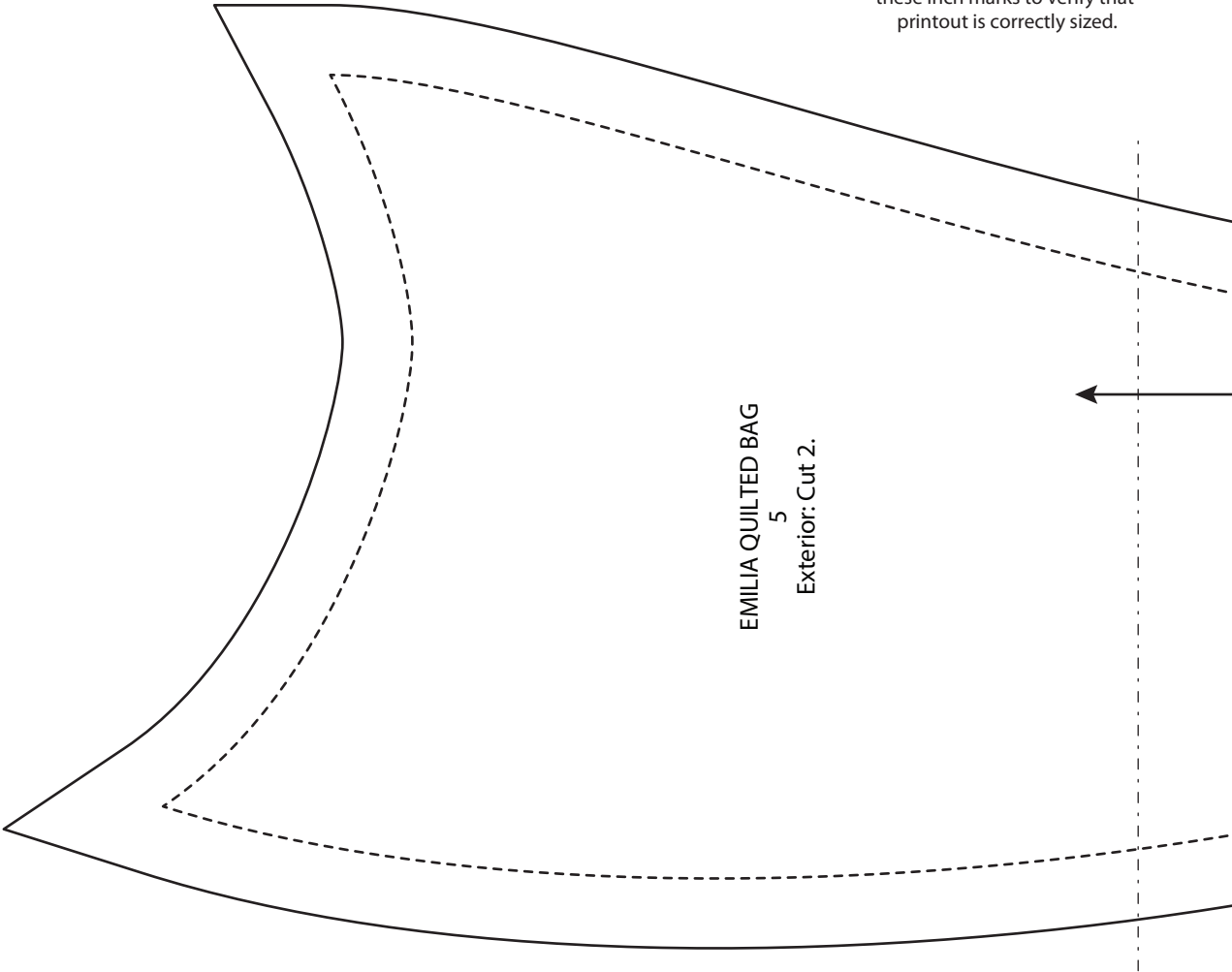


Emilia Quilted Bag 5 Pattern

To make complete pattern, join the following pages, following the diagram for reference.

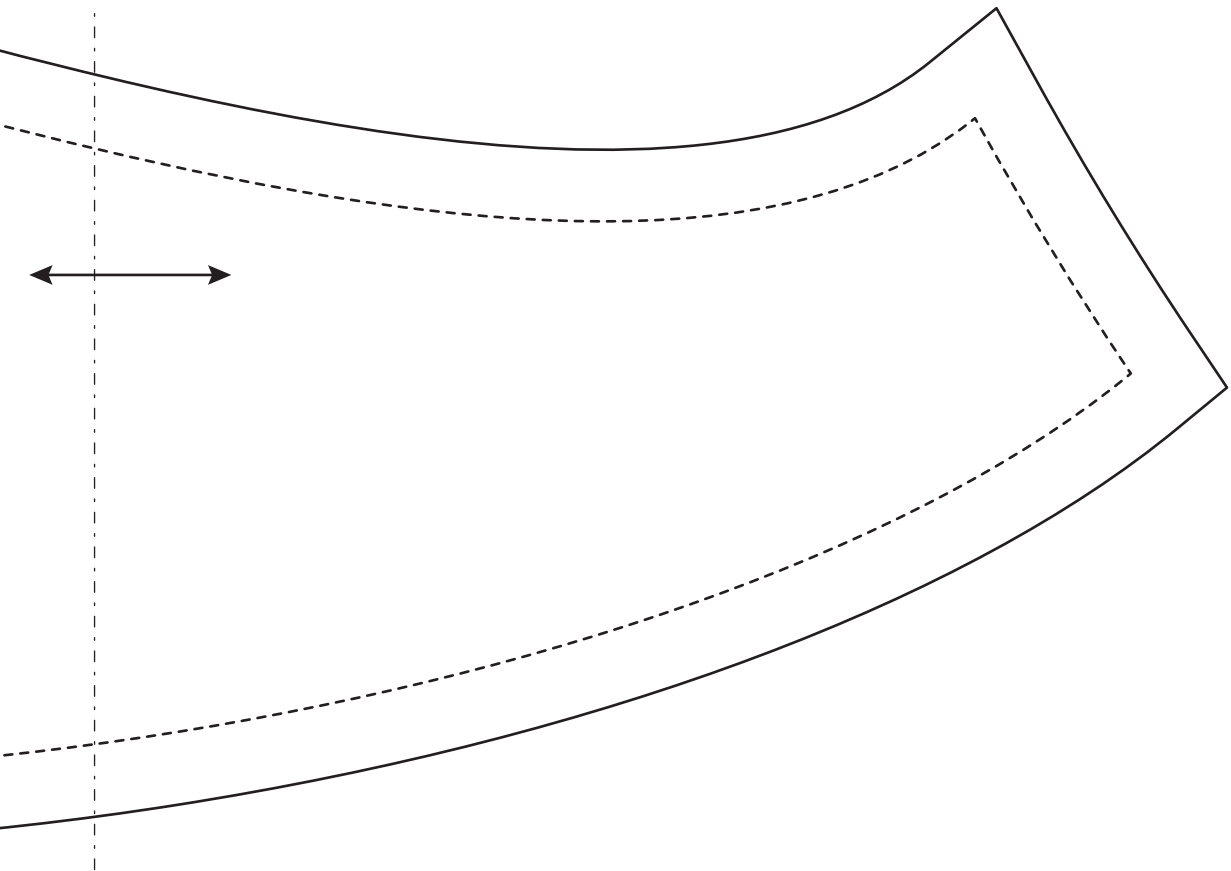
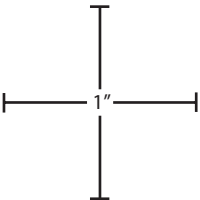
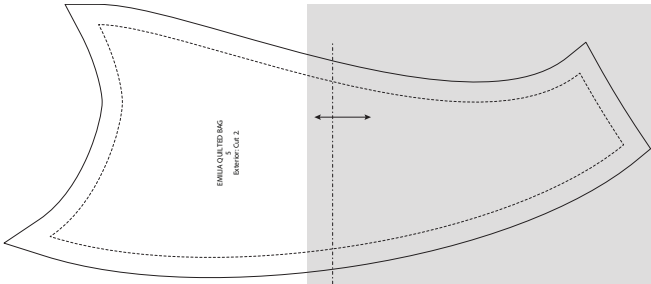


Use a ruler to measure these inch marks to verify that printout is correctly sized.



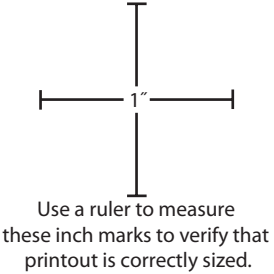
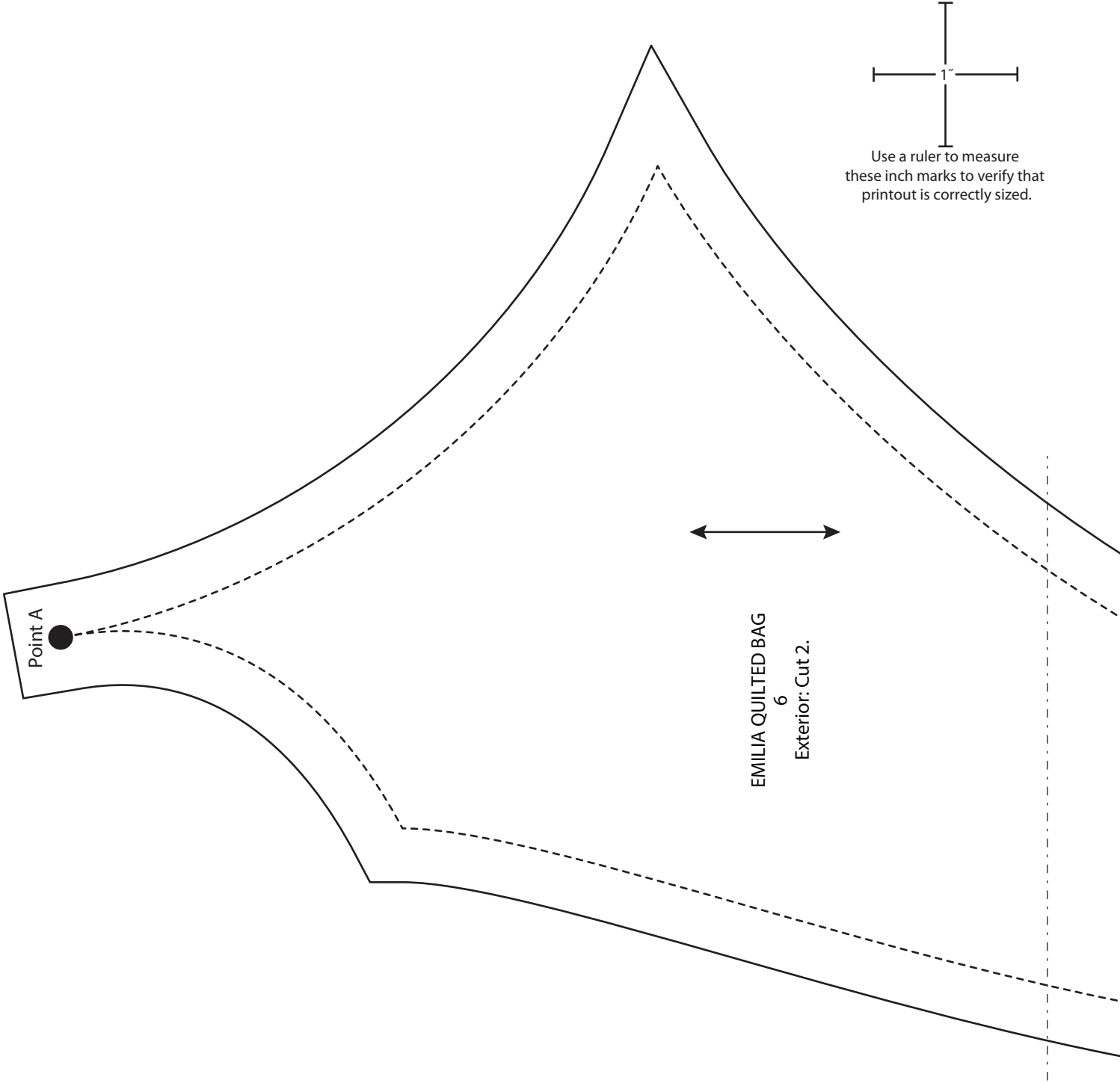
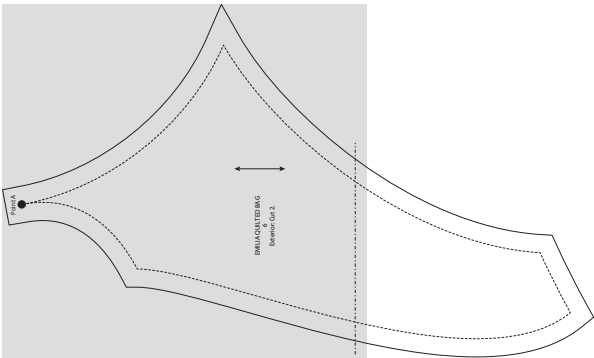
Emilia Quilted Bag 5 Pattern

To make complete pattern, join the following pages, following the diagram for reference.



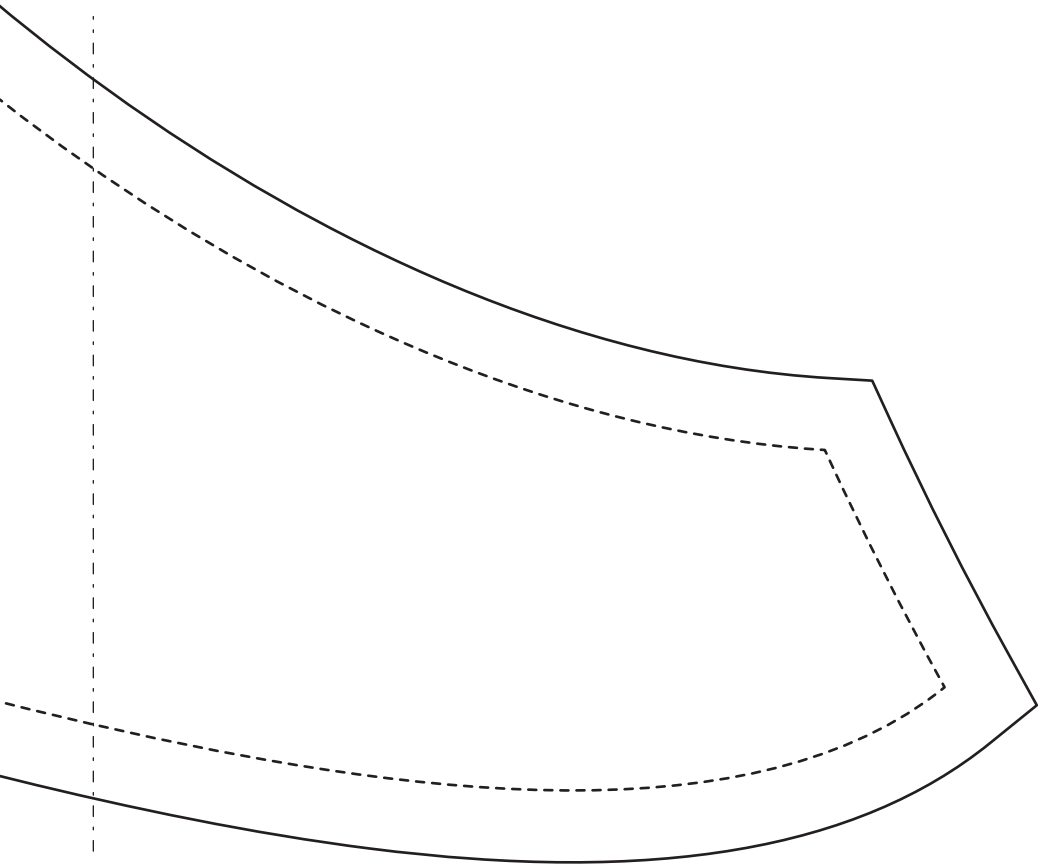
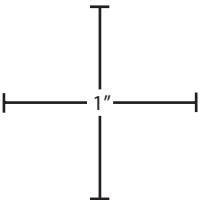
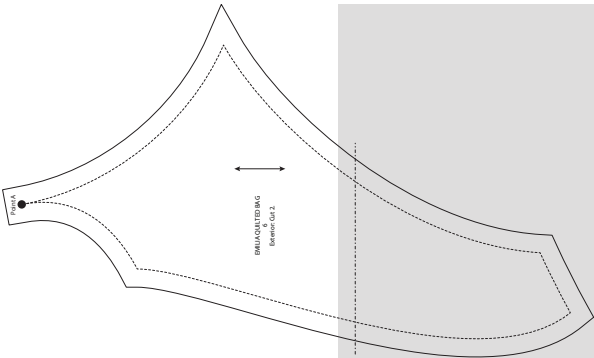
Emilia Quilted Bag 6 Pattern

To make complete pattern, join the following pages, following the diagram for reference.

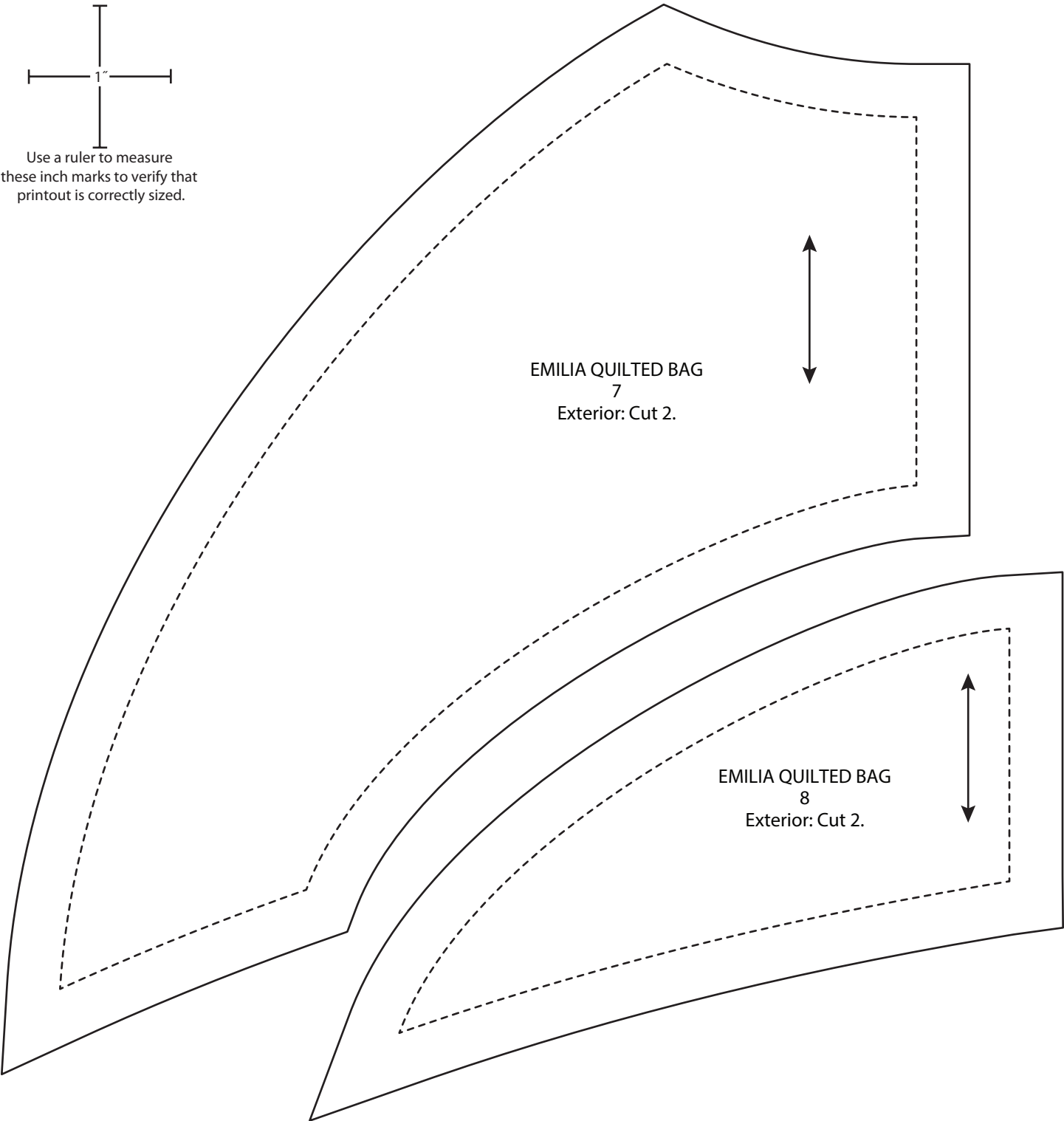
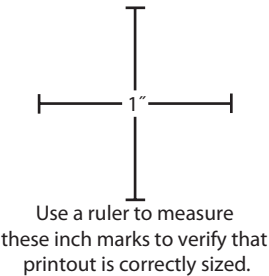


Emilia Quilted Bag 6 Pattern

To make complete pattern, join the following pages, following the diagram for reference.

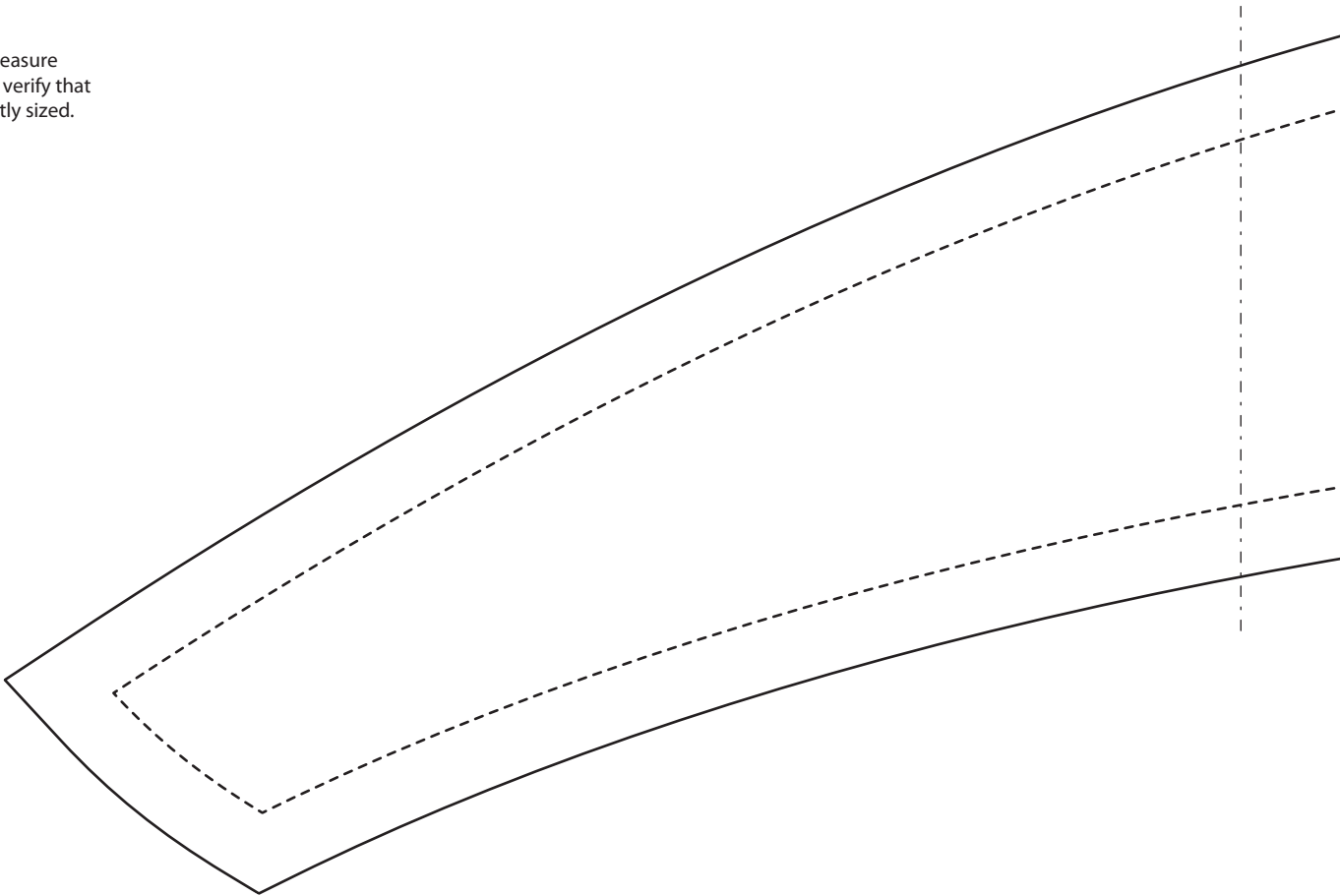
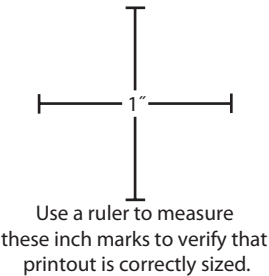
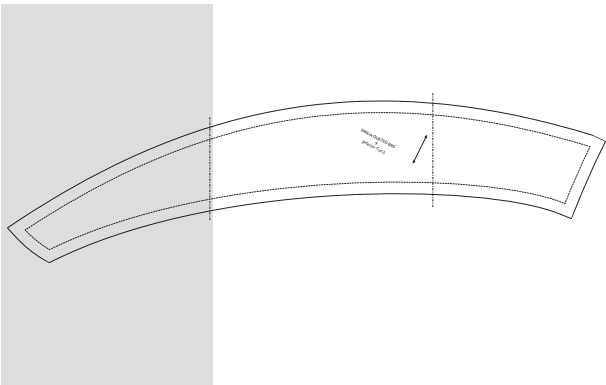


Emilia Quilted Bag 7 Pattern
Emilia Quilted Bag 8 Pattern



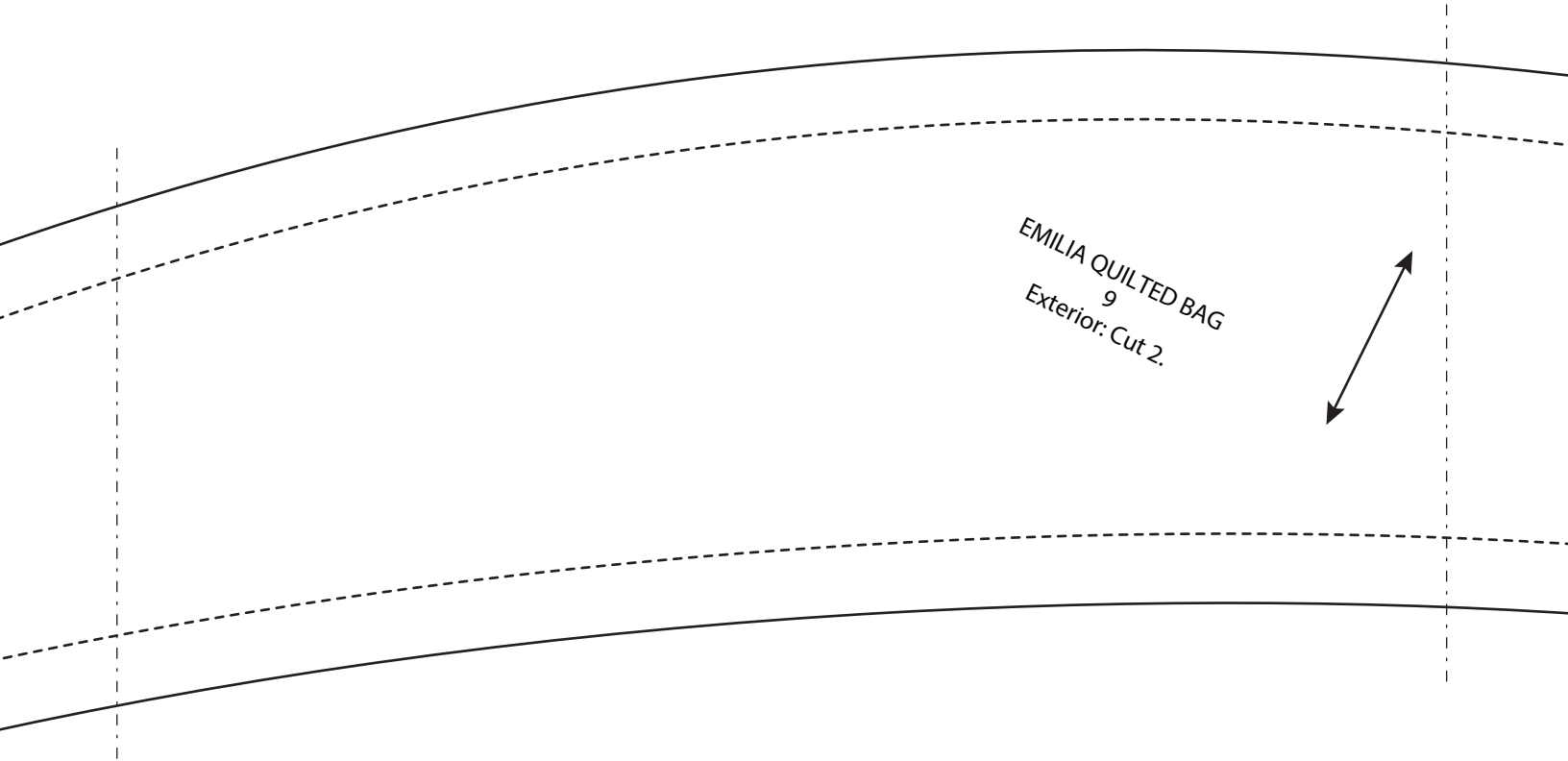
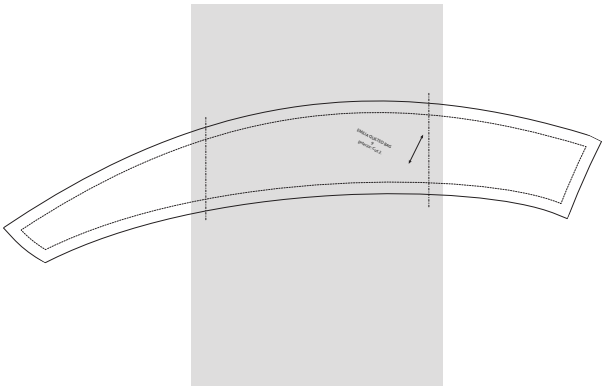
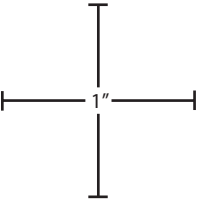
Emilia Quilted Bag 9 Pattern

To make complete pattern, join the following pages, following the diagram for reference.



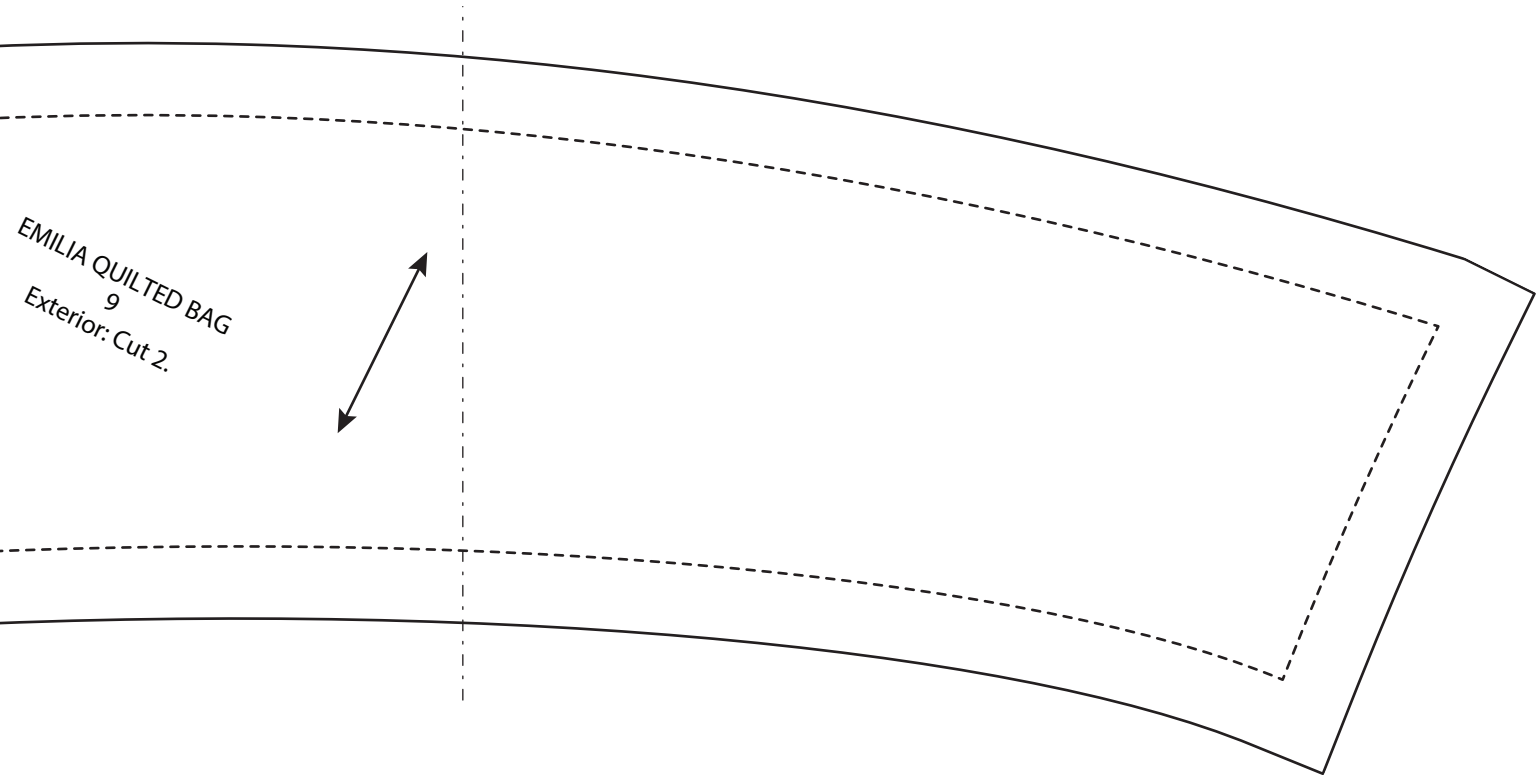
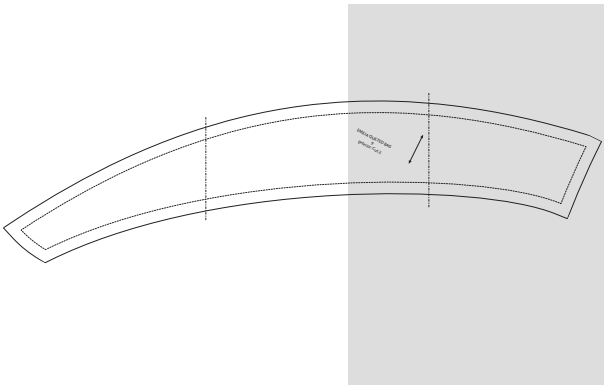
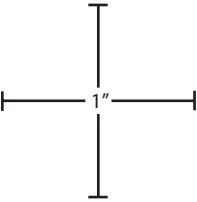
Emilia Quilted Bag 9 Pattern

To make complete pattern, join the following pages, following the diagram for reference.



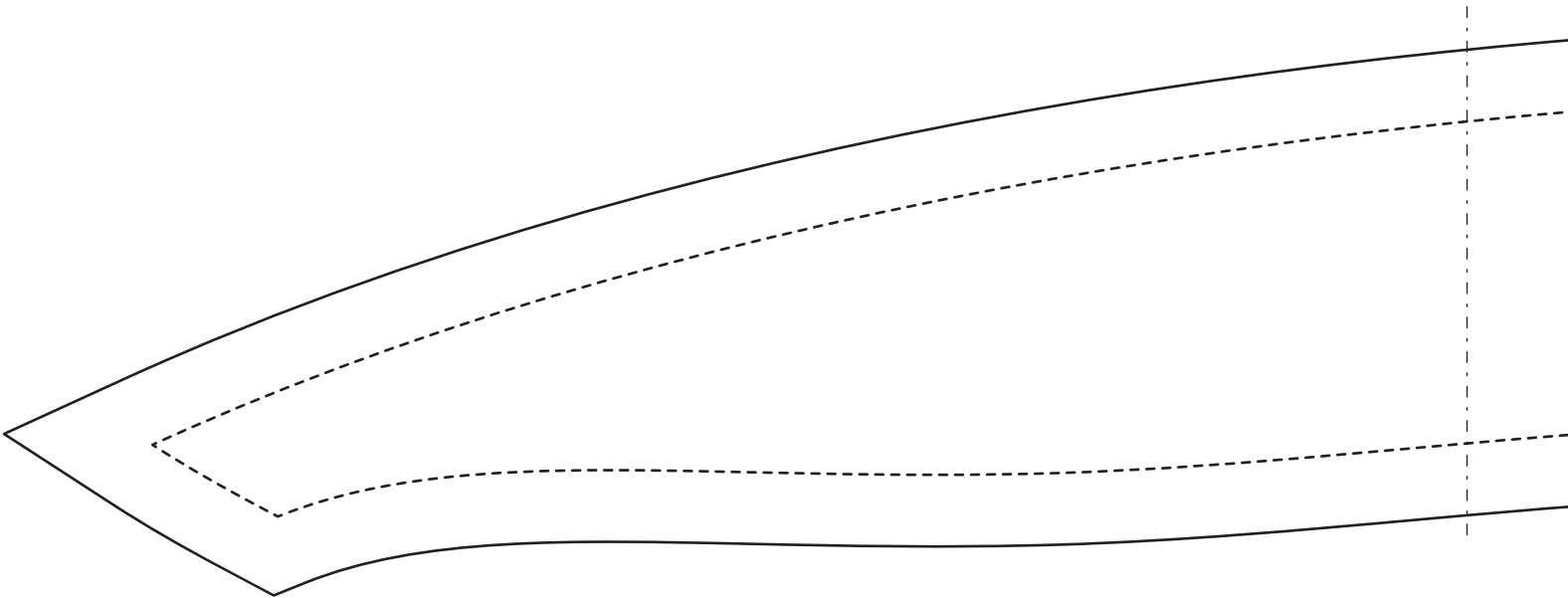
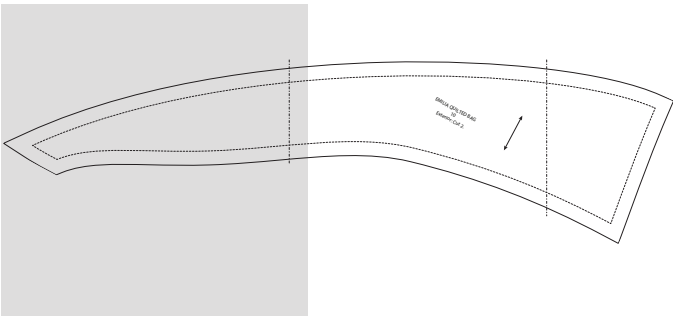
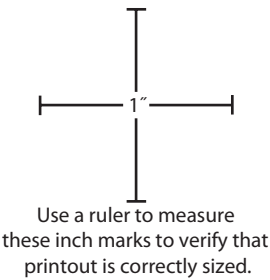
Emilia Quilted Bag 9 Pattern

To make complete pattern, join the following pages, following the diagram for reference.



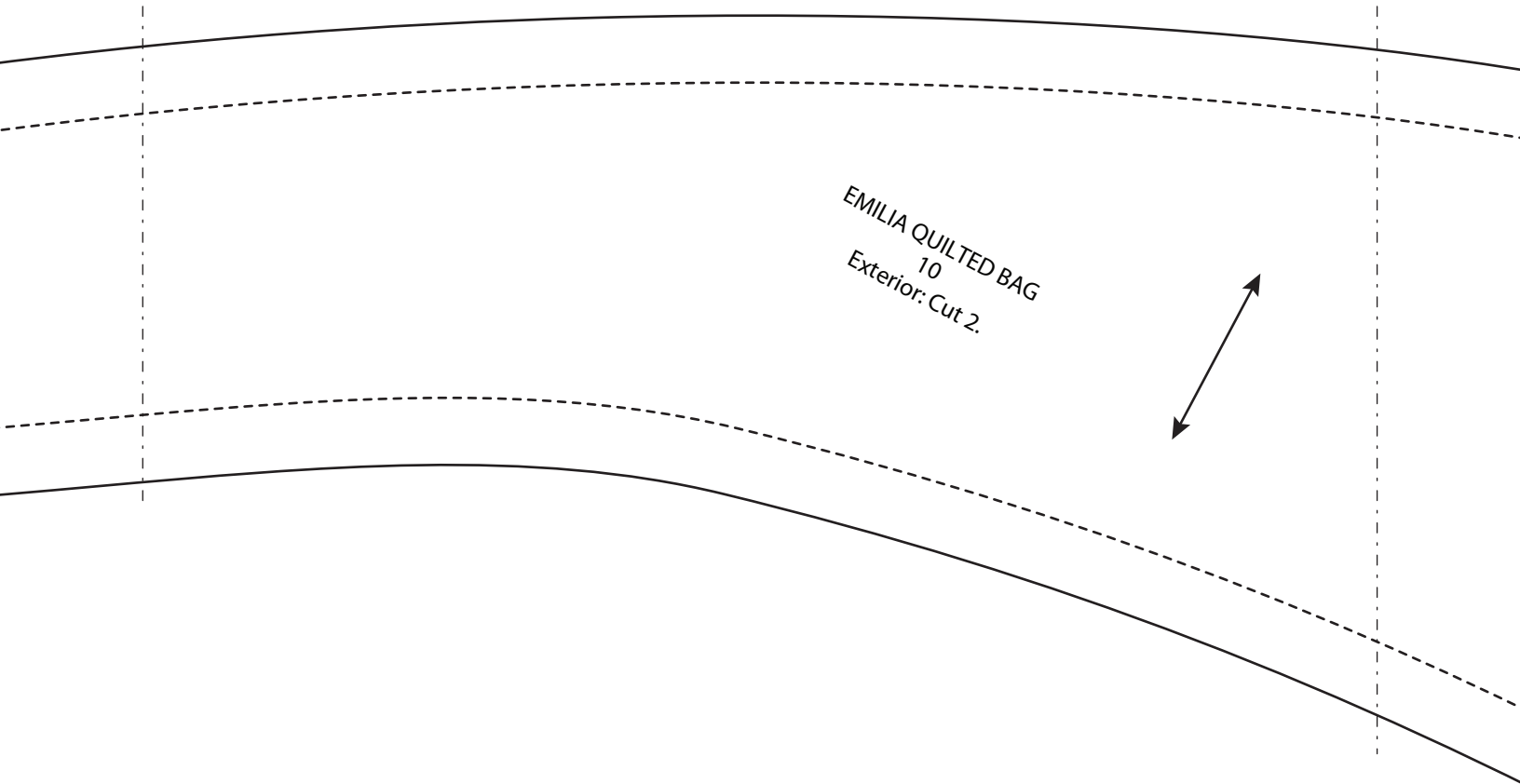
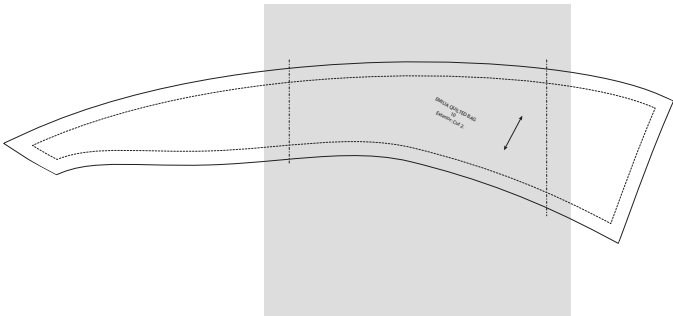
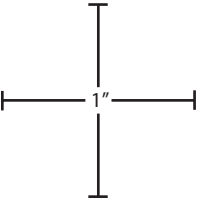
Emilia Quilted Bag 10 Pattern

To make complete pattern, join the following pages, following the diagram for reference.



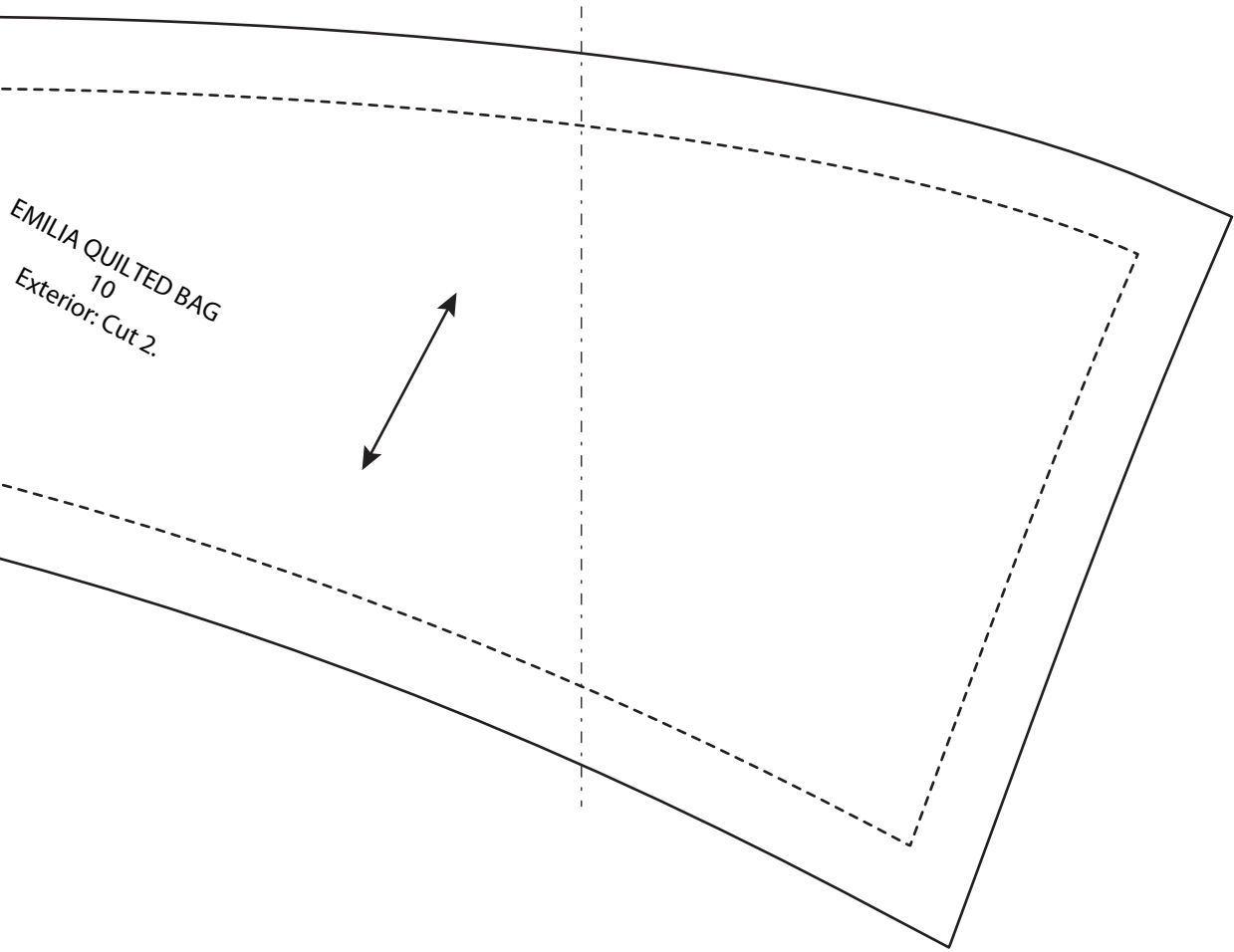
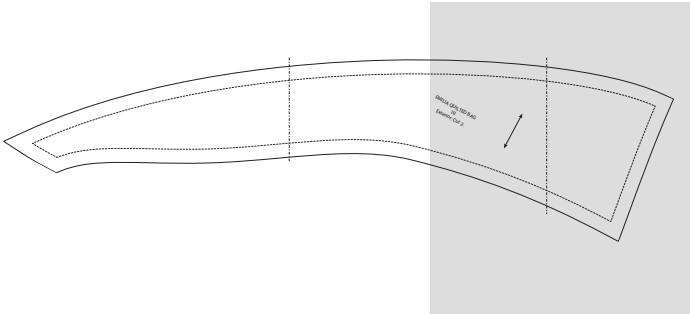
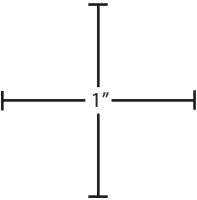
Emilia Quilted Bag 10 Pattern

To make complete pattern, join the following pages, following the diagram for reference.



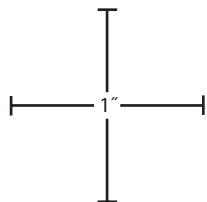
Emilia Quilted Bag 10 Pattern

To make complete pattern, join the following pages, following the diagram for reference.

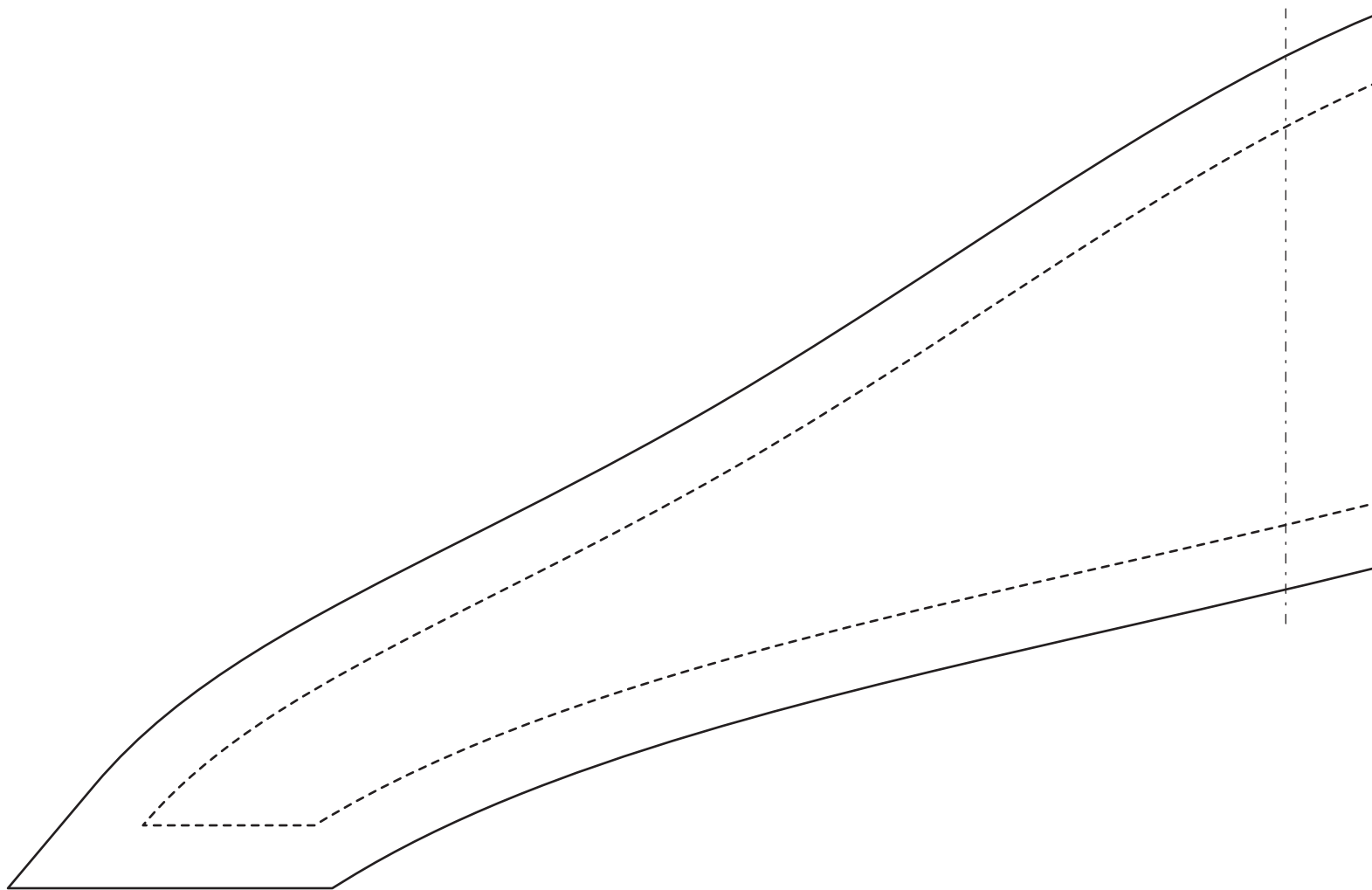
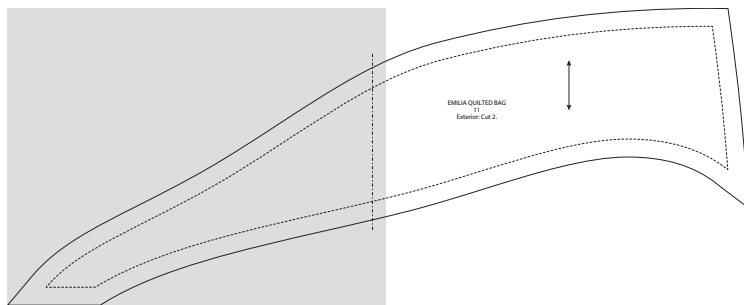


Emilia Quilted Bag 11 Pattern

To make complete pattern, join the following pages, following the diagram for reference.

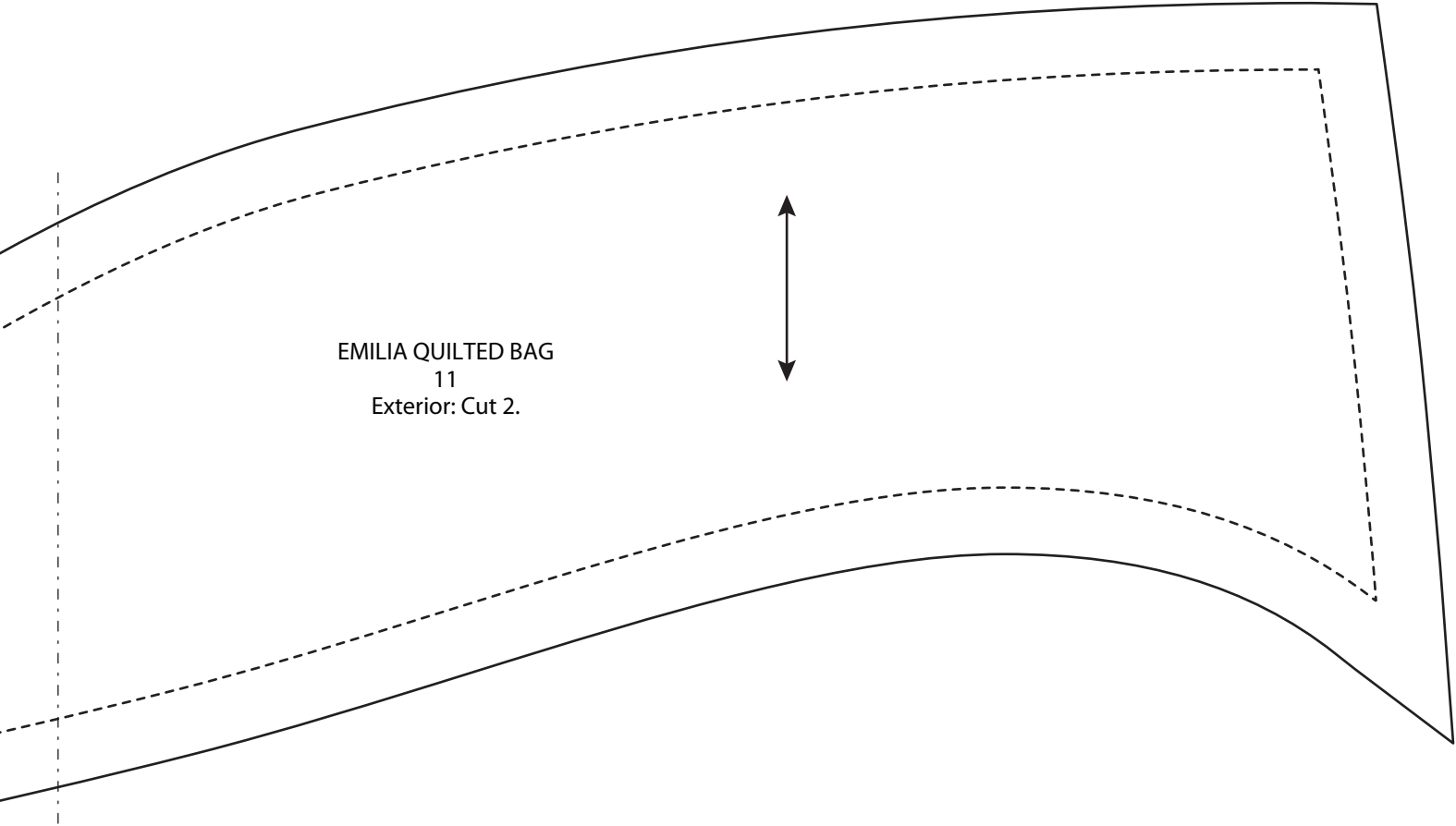
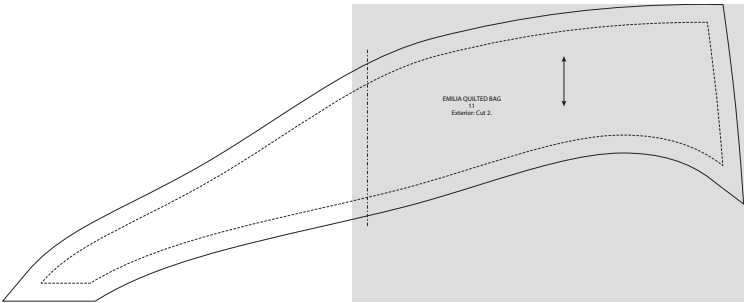
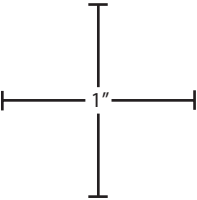


Use a ruler to measure these inch marks to verify that printout is correctly sized.



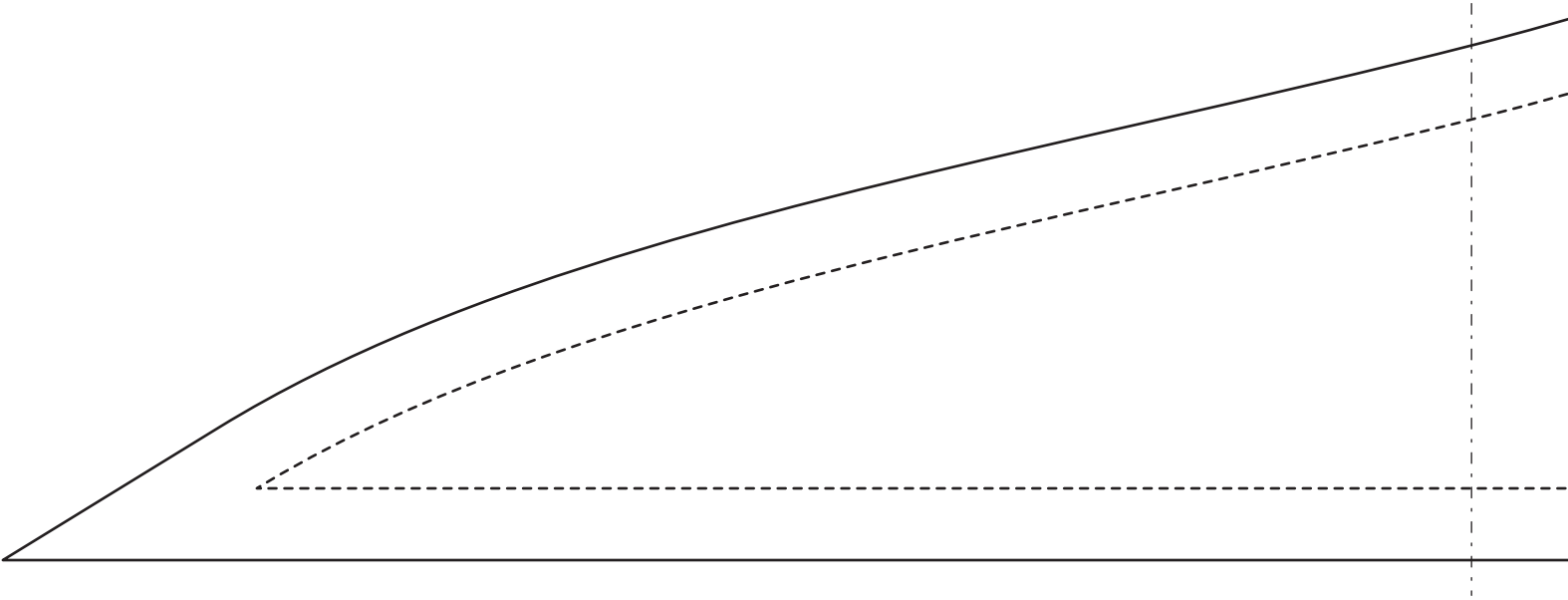
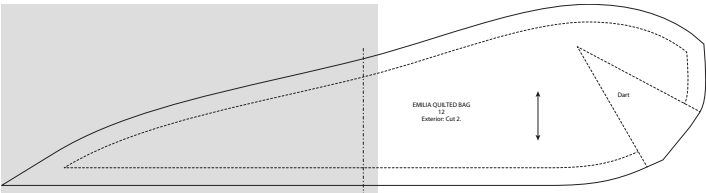
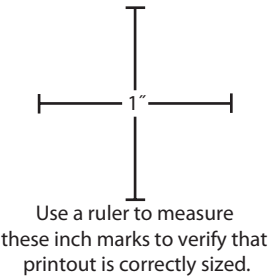
Emilia Quilted Bag 11 Pattern

To make complete pattern, join the following pages, following the diagram for reference.



Emilia Quilted Bag 12 Pattern

To make complete pattern, join the following pages, following the diagram for reference.



Emilia Quilted Bag 12 Pattern

To make complete pattern, join the following pages, following the diagram for reference.

